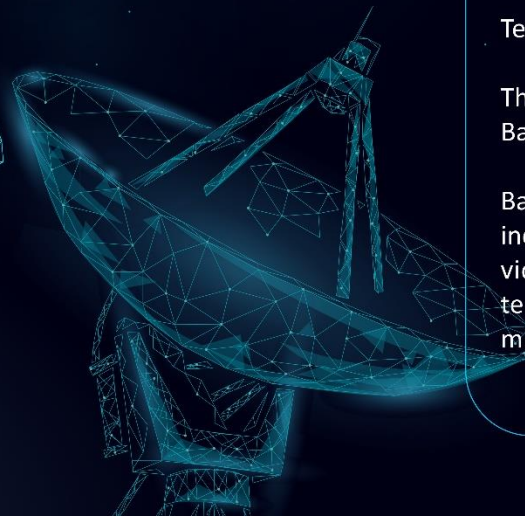
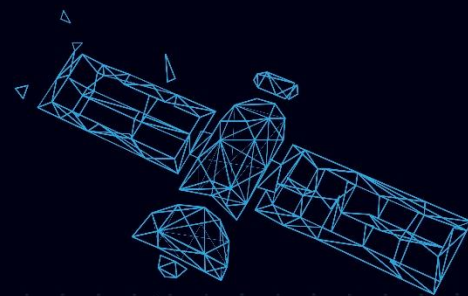




STAR ONE C2

A Hot Position Brasil

Embratel
star one



Satellite Star One C2

A Hot Position Brasil

Star One C2 was launched in April 2008 and together with Star One C1, it is part of the third generation of Embratel Star One satellites (called C series). These new satellites ensure the continuity of telephone, television, radio, data transmission and internet services in Brazil and also expand these services to Latin American countries.

The Star One C2 satellite occupies the 70.0 ° W orbital position, the most important for the Broadcasters market in Brazil. This position is considered a hot position for transmitting the signals of the largest television stations in the country and still has a park of approximately 25 million satellite dishes pointed.

The launch was made from the Kourou base, in French Guiana, by the Arianspace rocket. From the arrival at its correct orbital position, the satellite control started to be done by the Embratel Star One team at Guaratiba Station, in Rio de Janeiro.

The Star One C2 satellite orbits 36,000 kilometers of the earth's surface and has almost twice the power of Brasilsat B1 (former satellite in this position), ensuring coverage of the entire national territory and ensuring expansion to all of South America, Mexico and Florida (USA).

Technical Data

The Star One C2 has transponders (signal receivers and transmitters) in Band C, Band Ku and Band X.

Banda C guarantees the offer of TV, radio, voice and data signals, including internet. Banda Ku guarantees the provision of services such as video and internet transmission directly to users, in addition to telephony in remote locations. Band X is an exclusive frequency for military use.

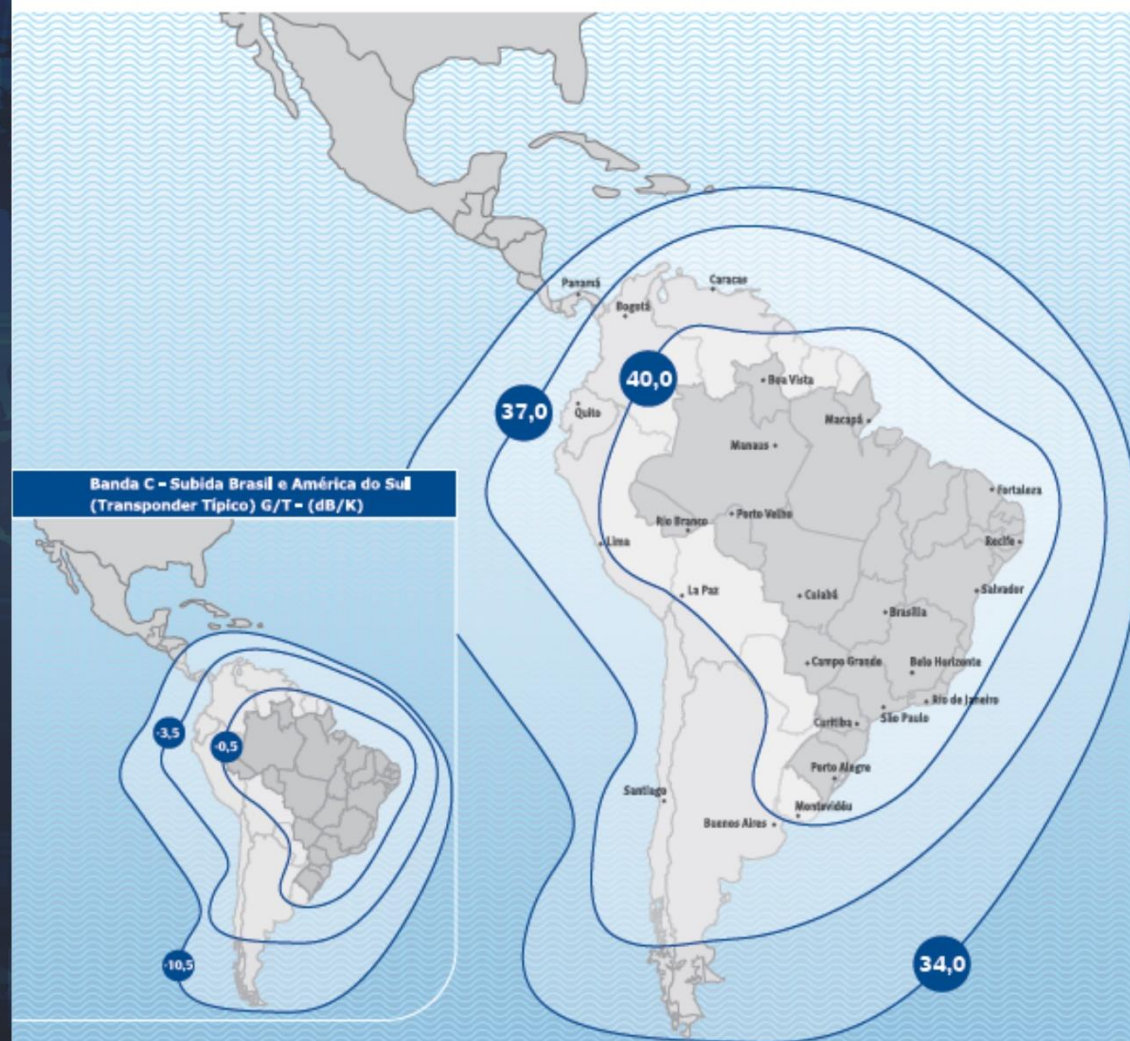


STAR ONE C2



Band C - Descent Brazil and AM. do Sul (Typical Transponder) - EIRP (dBW)

It is the second satellite of the third generation of the Star One fleet that covers not only the national territory, but also South America.



structure of streaming



At the earthly Station of Guaratiba there is the Space Segment Control Center (CCSE), responsible for monitoring satellites, and the Operations Control and Communications Center (COCC), which monitors signal transmission.



Embratel
star one



OPEN CHANNELS WITH HIGH AUDIENCE INDEX

TV Globo, SBT, Record, TV Brasil, Band Rede, Rede Vida, Rede Minas, Rede TV, Record News, Canal Rural, etc

GOVERNMENTAL CHANNELS

TV Senado, TV Câmara, NBR, TV Brasil Rede, TV Justiça
TV Saúde, TV Escola

SD TVS
OPEN

65

HD TVS
OPEN

30

TOTAL
OF TVS

714

RADIO
OPEN

34

TOTAL
RADIO

147

TOTAL OF
FREQUENCIES

143

Brazil

WITH MORE THAN 210 MILLION INHABITANTS DISTRIBUTED IN 5570 MUNICIPALITIES IN 26 STATES, BRAZIL IS THE LARGEST COUNTRY IN SOUTH AMERICA, AND THE 5TH LARGEST IN THE WORLD. WITH AN AREA 47.3% OF THE TERRITORY SOUTH AMERICAN COUNTRY, IS THE ONLY AMERICA WHERE DO YOU SPEAK MOSTLY THE LANGUAGE PORTUGUESE. IN ADDITION TO BEING ONE OF MORE MULTI-CULTURAL NATIONS AND ETHNICALLY DIVERSE, HAS THE EIGHTH LARGEST GDP IN THE WORLD, WITH 2ND LARGEST ECONOMY IN THE AMERICAS, AND THE 8TH LARGEST IN THE WORLD.

+ 50% 

OF THE POPULATION OF BRAZIL WATCHES TELEVISION THROUGH SATELLITE STARONE C2



+ 125 MILLION VIEWERS

Embratel
star one

